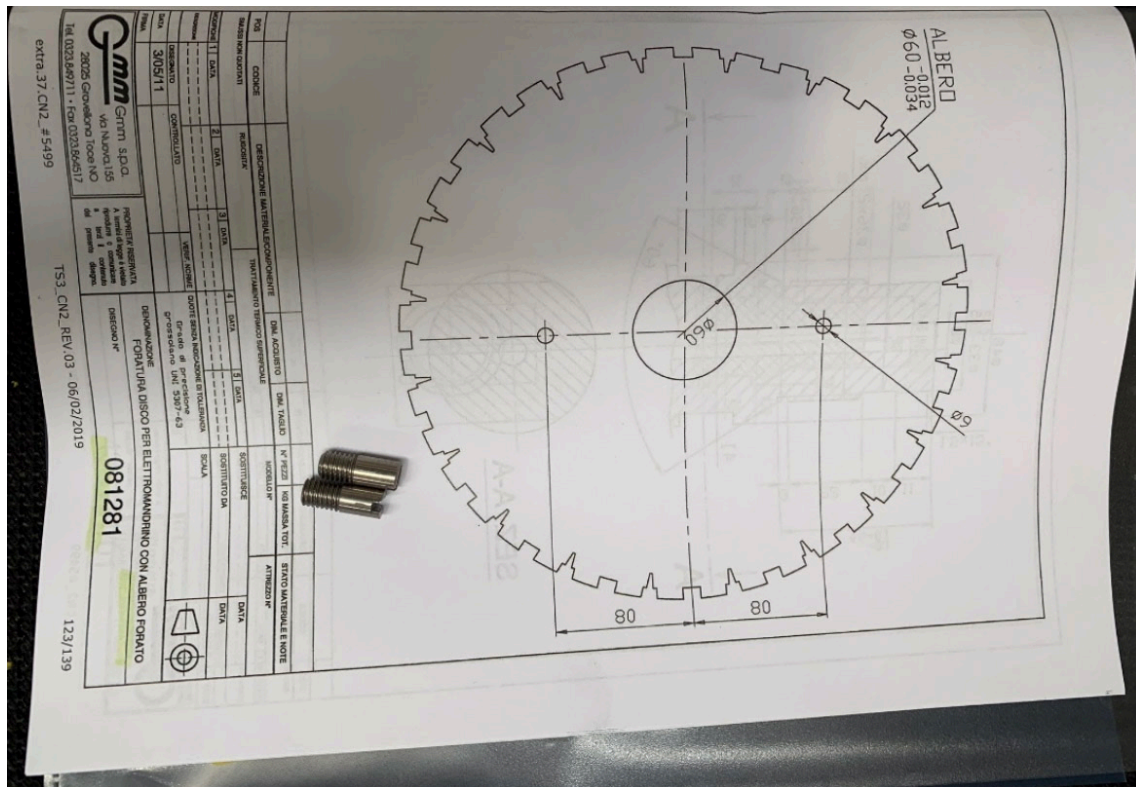


Field Service Bulletin: T004/10/06/2019
Effective Date: 10th June 2019
Machine Supplier: Gmm
Machine Model: All Gmm Bridge Saw machinery with Core Drill/Routing/Contouring Capability
To: All CDK Stone technical Staff & Customers

Content:

1. A safety risk has been recently brought to our attention that all blades must be secured with Lock pins (provided by Gmm) if the machine is to be used for **Core Drilling/Routing/Contouring**. The reason for this is because these tools require the spindle to turn in the opposite direction to the blade which could enable the Blade nut to become loose, in turn causing damage to the blade and creating a safety risk of high-speed projectiles being ejected from the machine.

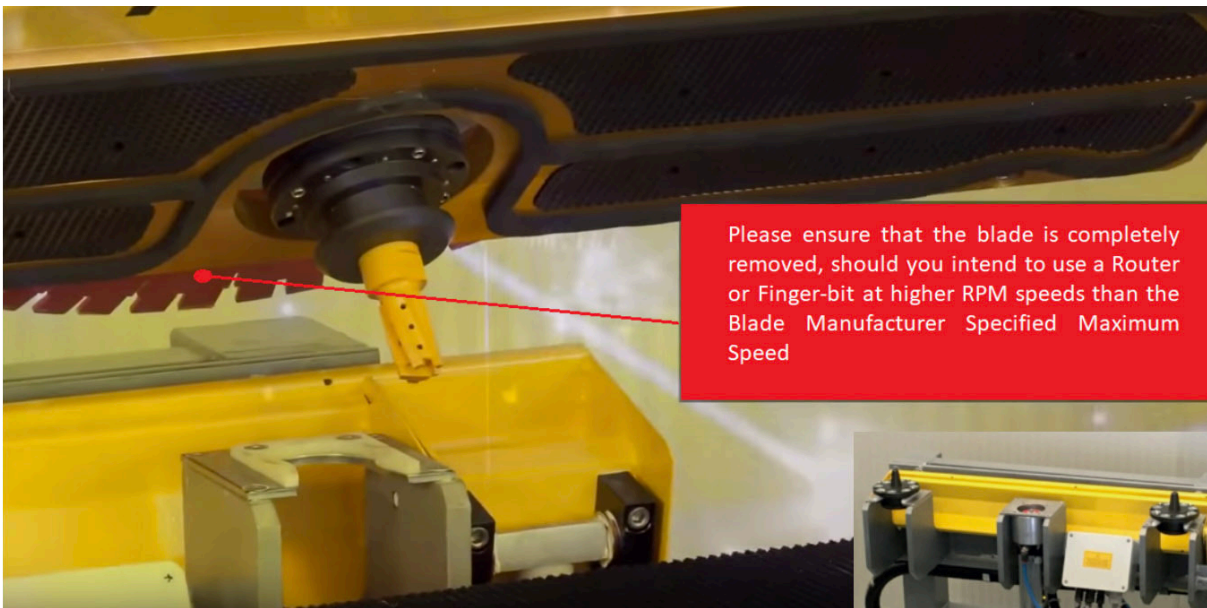


! PLEASE ENSURE THAT WHEN ORDERING YOUR BLADES, YOU REQUEST THAT THEY BE **PREDRILLED TO ACCEPT LOCK PINS**.

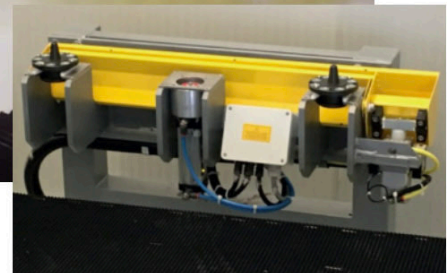
! PLEASE ENSURE THAT **EVERY TIME** AN OPERATOR/TECHNICIAN MANUALLY CHANGES A BLADE THE LOCK PINS ARE INSERTED.

2. In addition to using the pins, you **must not** exceed the Blade Manufacturer specified maximum rotational speed on the machine. This is normally indicated on the sticker on every blade sold. **(Typical circumference speed allowed for most Diarex-Konig blade is 63m/s, around 2500 RPM. Depending on the Blade diameter)**

Should you intend to use a Router or Finger-bit at higher RPM speeds on the machines, please ensure that the blade is completely removed.



Please ensure that the blade is completely removed, should you intend to use a Router or Finger-bit at higher RPM speeds than the Blade Manufacturer Specified Maximum Speed



 PLEASE ENSURE THAT THE MACHINE SPINDLE **NEVER EXCEEDS** THE BLADE MANUFACTURER'S SPECIFIED MAXIMUM ROTATIONAL SPEED (TYPICALLY **2500 RPM** FOR DIAREX-KONIG BLADES UP TO 450MM DIAMETER)

 PLEASE ENSURE THAT IF YOU INTEND TO USE A ROUTER OR FINGER BIT ABOVE 2500 RPM, **YOU MUST REMOVE THE BLADE** COMPLETELY BEFORE RUNNING THE SPINDLE